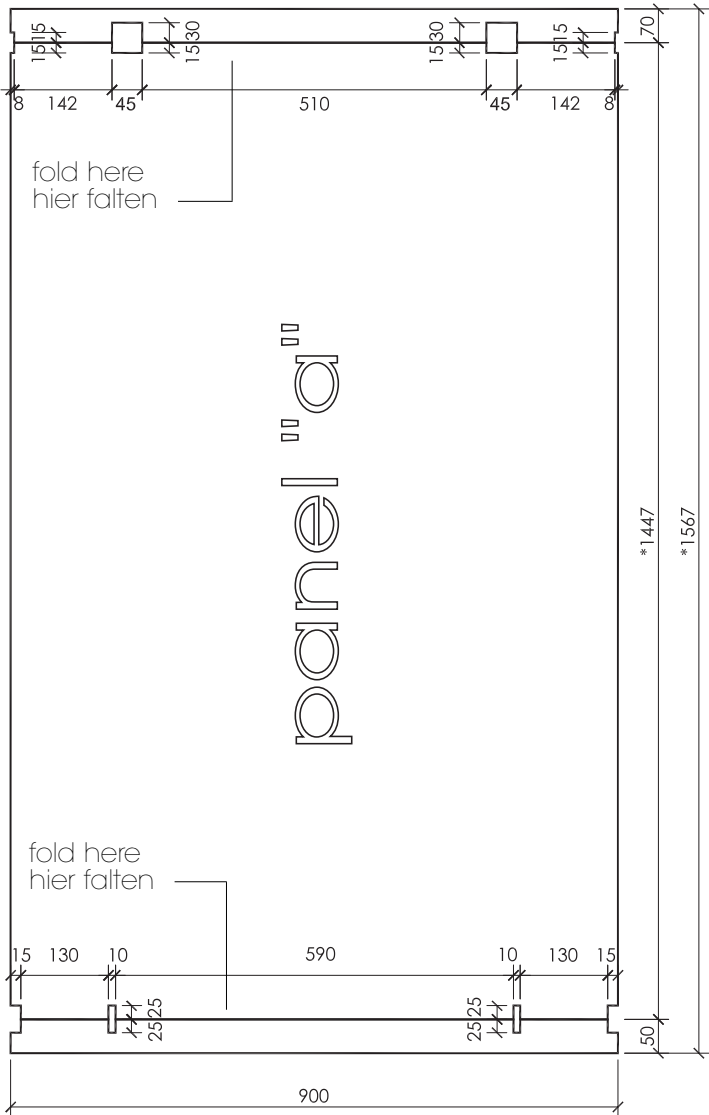


pe-879KTC cutting pattern

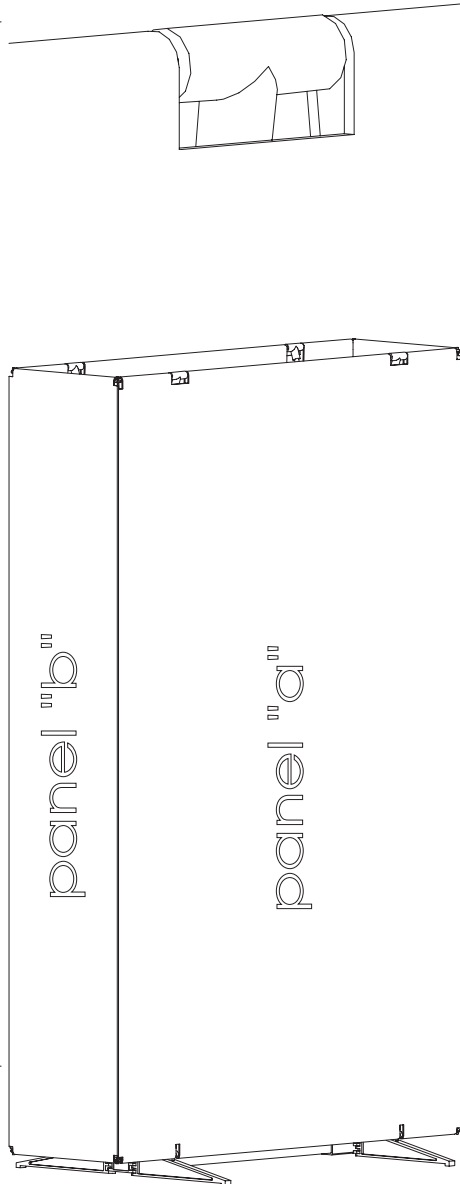
king size table top penguin - tower-twin - 90/27,5



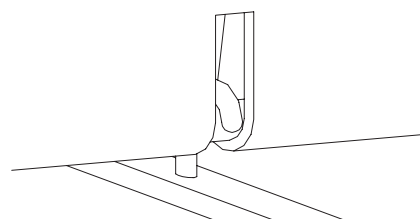
*for very stiff panels (i.e. lambda prints, ect.) add up to 5 mm to the length measurements

bei sehr steifen Paneelen (z.B. Lambda Prints, usw.) bitte bis zu 5 mm Länge zugeben.

(1447 mm -> 1452 mm
1567mm -> 1572 mm)

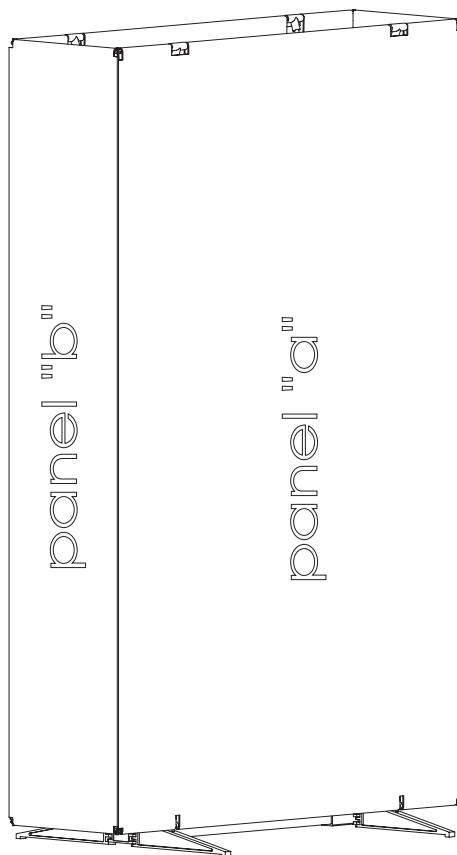
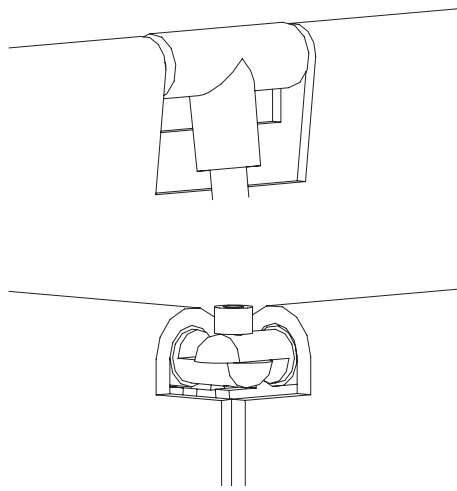


pe-879KTC



pe-879KTC cutting pattern

kingsize table top penguin - tower-twin - 90/27,5



pe-879KTC

